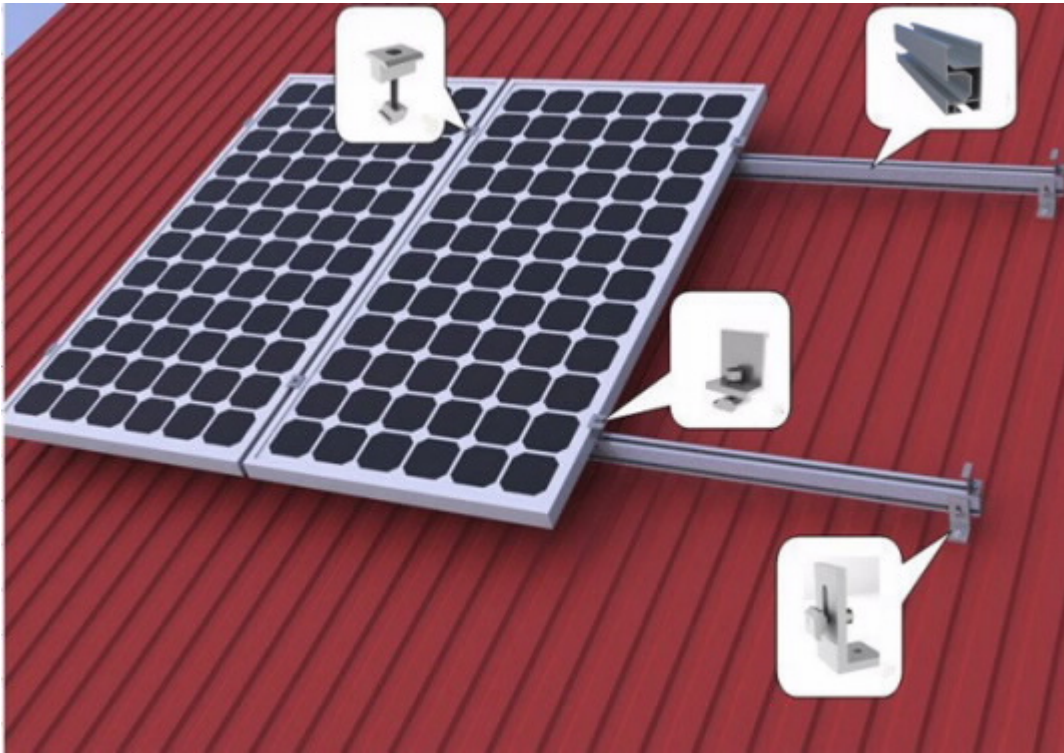
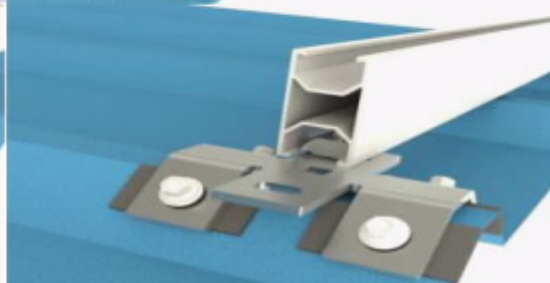
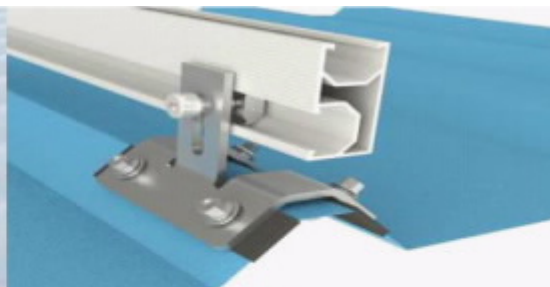
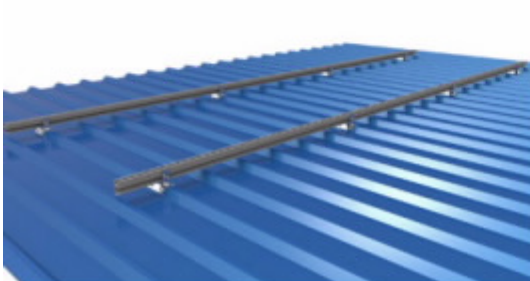
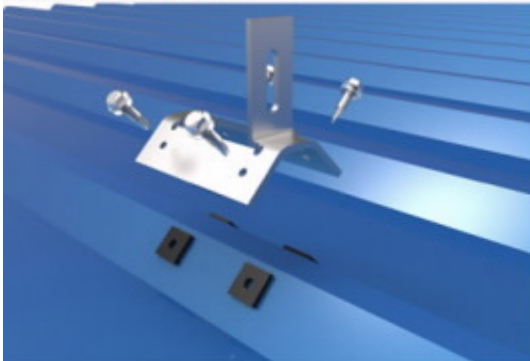


## Xiamen Tripsolar Metal Roof Solar Mounting

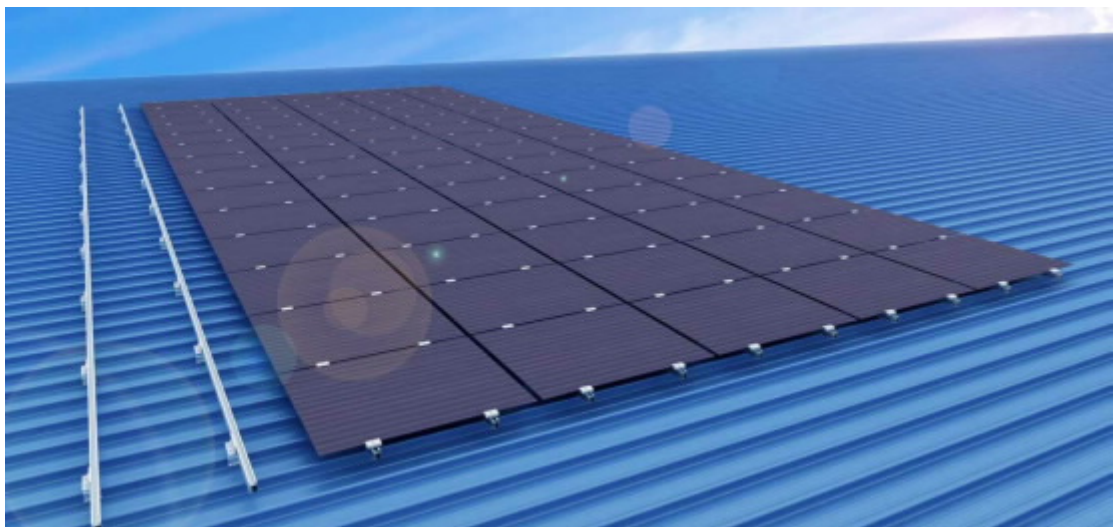
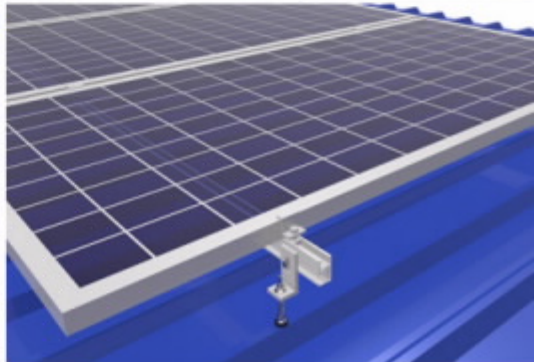
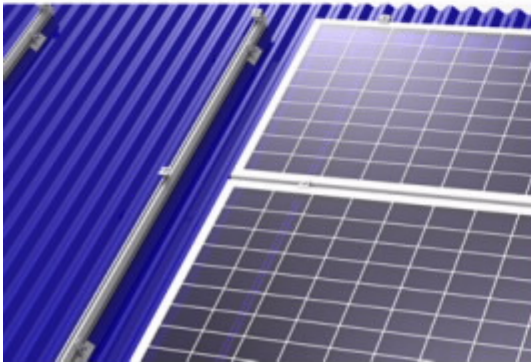
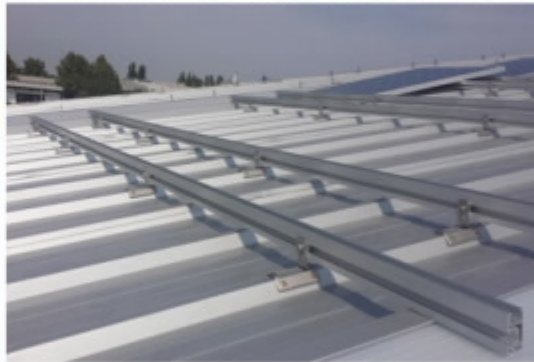
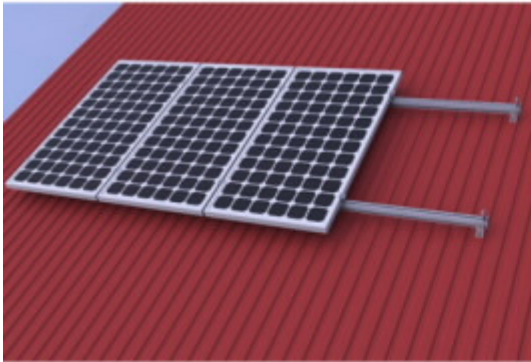


Install site	Metal, tin roof top
Max wind speed	Up to 60m/s
Snow load	Up to 130mph(60m/s)
Solar panel orientation	Landscape, vertical
Application module	Framed or frameless solar panel
Fasteners material	Stainless steel
Color	Natural
Survival life	More than 20 years

## Installation



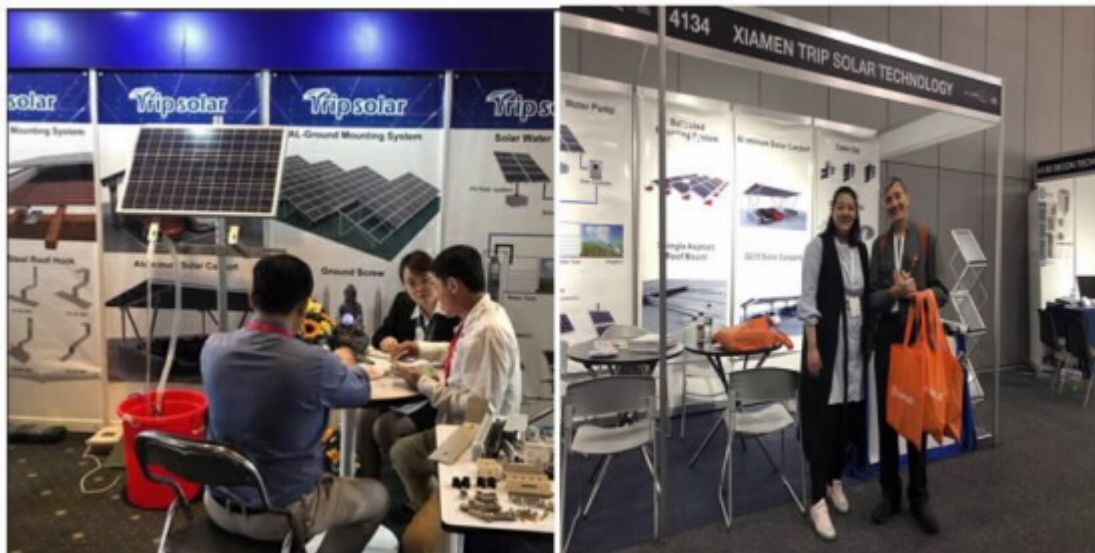
## Application



## Producing Procedure



## Company Profile



## Certificates



Phone:18256951005

Skype:Anna

Whatsapp:+ 86 18256951005

Weichat:+ 86 18256951005



